

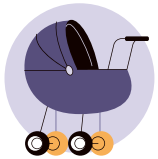


Department of Economic, Social and Environmental Affairs of the Canton of Basel-Stadt

Office of Economy and Labour

BASEL INCENTIVE PROGRAMME





Funding area: Parental Leave 2

- Additional voluntary parental leave 3
- Applying for funding 4



Funding area: Environment 5

- Measures-based funding 6
- Climate-reporting-based funding 7
- Applying for funding 8



Funding area: Innovation 9

- Labour Costs 10
- Depreciation on facilities 11
- Clinical Studies in Switzerland 12
- Applying for funding 13

The Basel Incentive Programme: In Favour of Parental Leave, the Environment and Innovation

Basel-Stadt is one of the leading business locations in Switzerland while simultaneously maintaining its position in an increasingly intensifying international competition among economic areas worldwide. With the introduction of the **Basel Incentive Programme** the Canton of Basel-Stadt is sending a strong message: Companies investing in **parental leave**, **climate protection** or **innovation** can expect targeted financial support. Applying for financial support is straightforward for companies of all sizes: Financial support relieves pressure on the corporate budget, creates room for manoeuvre for future strategic investment, and strengthens the company's reputation as an attractive employer.

With the Basel Incentive Programme, the canton aims to encourage and support entrepreneurial energy in core areas of future economic activity in a straightforward, simple, and business-friendly manner, in order to give a sustainable boost to the competitiveness of the business location Basel-Stadt. For this purpose, the canton is allocating funds of between **150 and 500 million Swiss Francs** annually.

The following fact sheets provide an overview of which business practices are eligible for financial support, the actual amount and calculation of financial support available, who has the right to apply, and how you can submit an application for financial support on behalf of your company.



Basel Incentive Programme PARENTAL LEAVE

Financial Support for Companies with Voluntary Parental Leave

The Basel Incentive Programme supports family-friendly companies by supporting up to three weeks of additional parental leave per employee.





Parental Leave

What qualifies for financial support?

Financial support is provided to company-approved parental leave that exceeds the legal provisions as determined by the Income Compensation Act (Erwerbsersatzordnung). Two conditions apply: The first day of this voluntary parental leave needs to be in the fiscal year 2025, and the employee's contractual as well as factual place of work needs to be in the Canton of Basel-Stadt.

Example

Because it is generally difficult to find highly qualified landscaping specialists, a landscaping enterprise in Basel is offering family-friendly working conditions to recruit and retain sought-after employees. Last year, after the birth of a child, the landscaping company therefore paid the salary of its employees for two additional weeks of parental leave. For this voluntary accommodation, the company can count on and benefit from financial support by the Basel Incentive Programme.

How much is covered by the financial support?

Financial support is available for a maximum of

3 weeks

of parental leave that exceeds the duration an employee is legally entitled to.

The daily rate is capped at

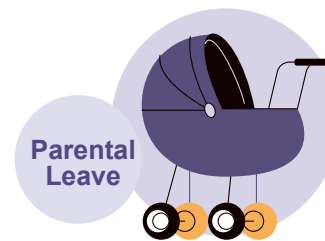
80% of regular income

or a maximum of CHF 220 per day. This is equivalent to the amount of the Swiss Compensation Office's standard daily rate an employee is legally entitled to.

Example of Cost Calculation

Additional parental leave approved:	2 weeks (14 calendar days)		
Monthly wage:	CHF	6,500	
Average income earned per day (CHF 6,500 × 12 ÷ 365):	CHF	214	
Compensation for each additionally approved day of parental leave (80% of CHF 214):	CHF	171	
Financial support for 14 calendar days:	CHF	2,394	





Applying for Financial Support

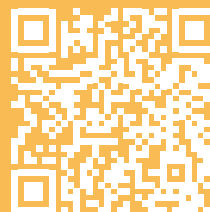
Who can apply?

Entitled to an application for financial support are **legal entities**

- with tax liability in the Canton of Basel-Stadt (unlimited or limited)
- as well as tax-exempt organisations in Basel-Stadt with a public, non-profit or charitable mission.

Submit your application by 30 June 2026

Please find more detailed information about the Basel Incentive Programme, conditions of qualifying for financial support, and the documentation required for your application at bs.ch/en/basel-incentive-programme



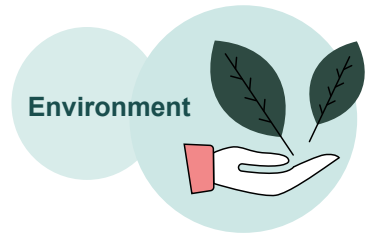


Basel Incentive Programme ENVIRONMENT

Financial Support for Environmentally Conscious Companies

Based on climate reporting and implemented measures, the Basel Incentive Programme offers financial support to companies investing in climate protection.





Measures-based Funding

What qualifies for financial support?

Financial support is granted for **measures implemented in the fiscal year 2025**, provided that, compared to the initial state:

- they considerably reduce the company's direct greenhouse gas emissions or
- they noticeably improve its energy efficiency.

Example

A manufacturing company located in Basel-Stadt has installed a cooling waste heat recovery facility with which it can compensate part of its heating energy need. As a consequence, it was able to significantly lower its use of natural gas and therefore direct CO₂ emissions. Thus, a substantial part of investment costs can be supported retroactively through the Basel Incentive Programme.

How much is covered by the financial support?

40%

of investment costs

for measures implemented in the Canton of Basel-Stadt

20%

of investment costs

for measures implemented in the rest of Switzerland.

Mark-ups and mark-downs:

All submitted measures are evaluated within the categories of greenhouse gas emissions or energy efficiency according to their cost efficiency (What is the impact per Swiss Franc invested?) In a next step, measures are classified in three categories:

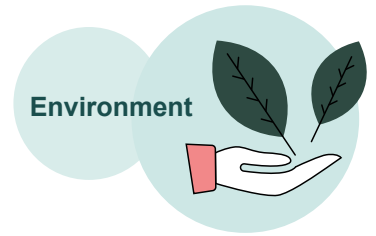
First tier:
+25% mark-up on financial support

Second tier:
no mark-up or mark-down

Third tier:
-25% mark-down on financial support

Investment costs			
Waste heat recovery:	CHF		300,000
Financial support (40% of CHF 300,000):	CHF		120,000
Mark-up first tier (25% of CHF 120,000):	CHF		30,000
Total financial support:	CHF		150,000





Climate-reporting-based Funding

What qualifies for financial support?

Financial support is granted for a **measurable reduction in greenhouse gas emissions (Scope 1)** in fiscal year 2025 compared to the previous year. Based on the company's climate reporting, the relevant metric is the reduction in emissions intensity achieved.

Example

A logistics company located in the Canton of Basel-Stadt publishes its annual climate report according to GRI standards. The report shows that in the reporting year Scope 1 emissions intensity per employee were substantially reduced compared to the year before. The Basel Incentive Programme compensates these savings in CO₂ equivalents.

How much is covered by the financial support?

Every ton of CO₂ equivalent saved is compensated with

CHF 30

(up to a maximum of CHF 5 million per legal entity per year).



Example of Cost Calculation

2024

Scope 1 emissions in tons of CO ₂ eq:	80,000
Employees (headcount):	7,300
Emissions intensity (CO ₂ eq/employees):	10,96

2025

Scope 1 emissions in tons of CO ₂ eq:	70,000
Employees (headcount):	7,350
Emissions intensity (CO ₂ eq/employees):	9,52

Resulting in a reduction of **10,584 tons** of CO₂eq (10,96 – 9,52 = 1,44 × 7,350)

and a total compensation of **CHF 317,520** (10,584 tons × CHF 30)



Applying for Financial Support

Who can apply?

Legal entities are eligible to apply for financial support if they:

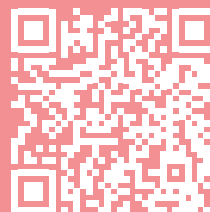
- are subject to **unlimited tax liability in the Canton of Basel-Stadt**
- or are subject to **limited tax liability in the Canton of Basel-Stadt** and have a qualifying facility located in the canton with an annual depreciation of at least CHF 100,000.

Maximum financial support per legal entity:
CHF 10 million

Minimum financial support per application:
CHF 2,000

Submit your application by 30 June 2026

Please find more detailed information about the Basel Incentive Programme, conditions of qualifying for financial support, and the documentation required for your application at bs.ch/en/basel-incentive-programme



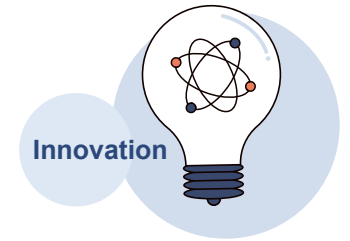


Basel Incentive Programme INNOVATION

Financial Support for Innovative Companies

The Basel Incentive Programme offers financial support to innovation-driven companies for labour costs, asset depreciation, and clinical study costs.





Labour Costs

What qualifies for financial support?

Labour costs during the fiscal year 2025 for employees working predominantly in the Canton of Basel-Stadt or Northwestern Switzerland, such as:

- researchers and developers
- specialised technical staff in the field of research and development (R&D)
- support personnel in R&D
- employees responsible for ensuring compliance with applicable regulations and standards.

Example

An IT company located in Basel-Stadt is developing new software for the automated evaluation of clinical imaging data that achieves new levels of classificatory precision so far unattainable for existing software. Labour costs for employees in research and development working on this project qualify for financial support under the Basel Incentive Programme.

How much is covered by the financial support?*

Labour costs in the Canton of Basel-Stadt** are covered on a tiered basis:

25%
up to CHF 5 million

20% between CHF 5 million and CHF 50 million

5% over CHF 50 million

In addition:

In case of existing patents and similar intellectual property protection rights the company is entitled to receive additional financial support in the amount of 3% of labour expenses.

Example of Cost Calculation		
Eligible R&D Labour costs	CHF	12,000,000
Calculation of financial support:		
25% of CHF 5 m	CHF	1,250,000
20% of CHF 7 m	CHF	1,400,000
Financial support	CHF	2,650,000



*If the sum of all funding commitments exceeds the funds available, financial support will be reduced proportionally to match the overall fund size.

**For remaining Northwestern Switzerland (except Basel-Stadt): basis for calculation 10% costs



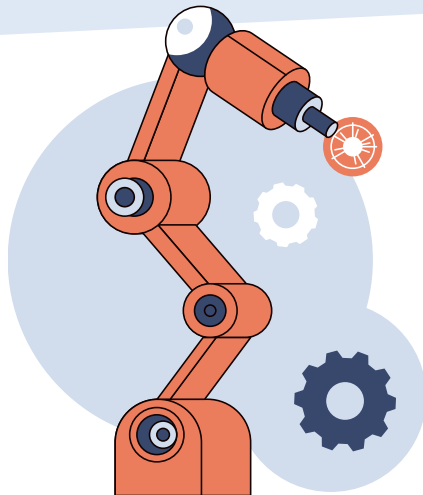
Depreciation of assets

What qualifies for financial support?

Depreciation recorded in the fiscal year 2025 on tangible assets in Switzerland that are necessary for research, development or high-tech manufacturing.

Example

In the past fiscal year, a pharmaceutical company located in Basel-Stadt made an investment in a new facility for active ingredients research that is exclusively used for the purpose of research and development. The Basel Incentive Programme offers financial support for a part of the depreciations on the facility.



How much is covered by the financial support?*

Depreciation costs in the Canton of Basel-Stadt** are covered on a tiered basis:

25%
up to CHF 1 million

20%
between CHF 1 million and CHF 5 million

5%
over CHF 5 million

In addition:

In case of existing patents and similar intellectual property protection rights the company is entitled to receive additional financial support in the amount of 3% of total eligible depreciation.

Example of Cost Calculation

Depreciation CHF 5,000,000

Calculation of financial support:

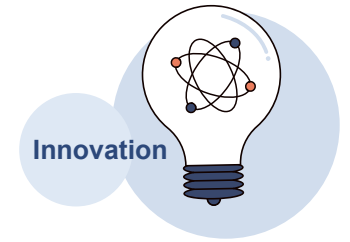
25% of CHF 1 m CHF 250,000
20% of CHF 4 m CHF 800,000

Amount of financial support CHF 1,050,000



*If the sum of all funding commitments exceeds the funds available, financial support will be reduced proportionally to match the overall fund size.

**For remaining Switzerland (except Basel-Stadt): basis for calculation 10% costs



Clinical Studies in Switzerland

What qualifies for financial support?

Financial support is provided for operating expenses in the fiscal year 2025 incurred by

- clinical studies conducted in Switzerland and
- manufacturing of active ingredients required for clinical studies in Switzerland.

How much is covered by the financial support?*

Eligible operating expenses for **clinical studies in Switzerland** are financially supported at a rate of

10%

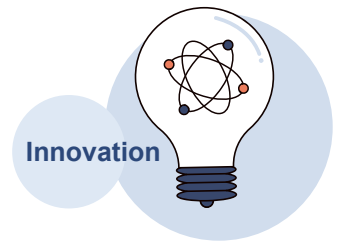
Example of Cost Calculation		
Eligible operating expenses:	CHF	10,000,000
Amount of financial support (10% of CHF 10 m):	CHF	1,000,000

Example

In the past fiscal year, a biotech company located in Basel-Stadt conducted a Phase II Study in Switzerland aimed at further developing a patented active ingredient. The Basel Incentive Programme offers the possibility of retroactive financial support of third-party expenses incurred by conducting the study.



*If the sum of all funding commitments exceeds the funds available, financial support will be reduced proportionally to match the overall fund size.



Applying for Financial Support

Who can apply?

Legal entities are eligible to apply for financial support if they:

- are subject to **unlimited tax liability in the Canton of Basel-Stadt**
- or are subject to **limited tax liability in the Canton of Basel-Stadt** and have a qualifying facility located in the Canton with an annual depreciation of at least CHF 100,000.

Additionally, the company must be demonstrably **innovation-oriented**.

A company meets this requirement

- if its R&D expenses of the past three years are on average equivalent to a **minimum of 5% of total expenses**
- or if the company belongs to one of the following, development-intensive industry sectors:
 - Food
 - Chemicals
 - Pharma
 - Metals and Mechanical Engineering
 - High Tech Instruments
 - Information and Communications Technology (Manufacturing and Services)
 - Research and Development

Submit your application by 30 June 2026

An application must include a company's ordinarily audited annual financial statements and a statutory auditor's confirmation of the calculation basis.

Please find more detailed information about the Basel Incentive Programme, conditions of qualifying for financial support, and the documentation required for your application at bs.ch/en/basel-incentive-programme

